



Clinical Chemistry Reagent



Your diagnostic solution partner

Chemistry

Company Profile

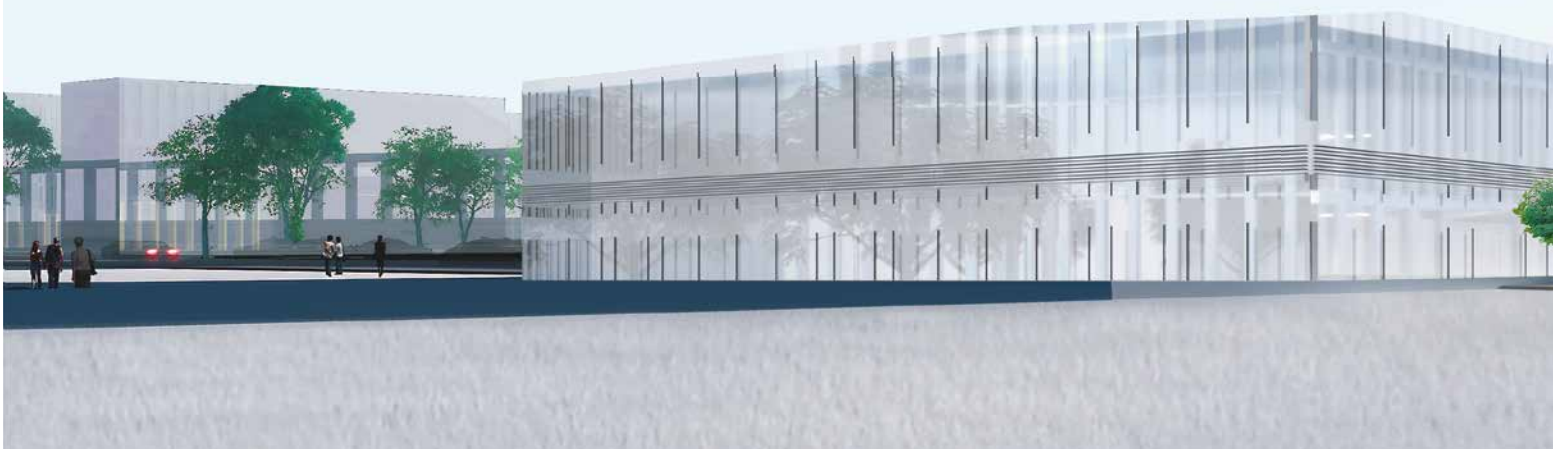
Zybio Inc. (referred to as “Zybio”) is a national high tech enterprise founded in 2008, one of the leading. Chinese medical companies dedicated in a comprehensive line of IVD reagents and equipment, including Hematology, Chemistry, CLIA, POCT, Molecule, Microbiology.

Since the beginning, Zybio has implemented high standard in all aspects in terms of research & development, production, marketing, sales and technical services, to satisfy the needs of our users.

Now, there are over 3000 employees totally and one-third of them are engaged in R&D, of which more than 50% have a master's degree or above.

We have built 8 R&D centers in China, including Chongqing R&D center, Shanghai R&D center, Guangzhou R&D center, Shenzhen R&D center, Beijing R&D center, Xiamen R&D center, Nanjing R&D center and Changchun R&D center. Strong R&D team guarantees more diverse and high-quality product, which drives us forward. In addition, we have an independent service center allocating more than 100 service or application engineers to serve our clients throughout the world.

Based on the ideology of “plan together, create together, share together”, we have set up a network of operations throughout China and keep expanding globally.



Our Mission:

To make diagnosis more accurate, to make life healthier

Our Vision:

To build a world-class brand leading in the global diagnostics field

Dedication to Accuracy



Content

Reagents	01
Hepatic Panel	02
Renal Panel	03
Lipids Panel	04
Cardiac & Cardiovascular Panel	05
Diabetes	06
Coagulation	07
Specific Proteins	07
Rheumatism & Rheumatoid Panel	08
Electrolytes	08
Inflammation	09
Pancreatitis	09
Zybio Calibrator	10-11
Zybio Control	12-13
Recommended Chemistry	14

A Chemistry Specialist

As a national high-tech medical enterprise, we are also recognized as a professional clinical chemistry reagent manufacturer who offers a wide range of reagents. About 100 chemistry reagents include but not limit to hepatic, renal, cardiac, lipids, diabetes, electrolytes, specific proteins assays as well as a line of exclusive products such as sdLDL-C, mAST are now available.

In addition to reagents which specialized for our own chemistry analyzer, we also offer you with a variety of dedicated bottle of reagents for other brands.

Flexible package size is available upon request.

Zybio reagents feature

Large range assay menu: about 100 chemistry markers

Cost effective, optimized reaction ratio

High quality, ISO13485 manufacturing

Liquid, ready to use, easy to use

3rd party calibrator and control for general chemistry

Original calibrator and control for special chemistry

Stable to expiry date at 2-8°C



Abbr.	Measurement Method	Volume	Package	Calibration Routine	Sample Type/ Min. Sample Vol (µL)	Linearity Range	Calibration Cycle / On-board Stability	Optimum Absorbance Wavelength	Preparation before Usage	Shelf-Life	Calibrator	Control
Hepatic Panel												
ALB	Bromocresol green	120mL	R:60mL*2	End-point	Serum/3	10.0~60.0g/L	Batch-wise/ 30 days	630 nm	Ready -to-use	12 months (2-8 °C)	/	/
		180mL	R:30mL*6									
TP	Biuret	120mL	R:60mL*2	End-point	Serum/5	10.0~120.0g/L	Batch-wise/ 30 days	546 nm	Ready -to-use	12 months (2-8 °C)	/	/
		180mL	R:30mL*6									
DBIL	Vanadate oxidizing	112.5mL	R1:30mL*3 R2:7.5mL*3	End-point	Serum, Plasma/10	2.0-300.0 µmol/L	Batch-wise/ 30 days	450 nm	Ready -to-use	12 months (2-8 °C)	/	/
		120mL	R1:48mL*2 R2:12mL*2									
TBIL	Vanadate oxidizing	112.5mL	R1:30mL*3 R2:7.5mL*3	End-point	Serum, Plasma/10	3.0-500.0 µmol/L	Batch-wise/ 30 days	450 nm	Ready -to-use	12 months (2-8 °C)	/	/
		120mL	R1:48mL*2 R2:12mL*2									
AST	Enzymatic	112.5mL	R1:30mL*3 R2:7.5mL*3	Rate	Serum, Plasma/12	10-1000.0 U/L	Batch-wise/ 28 days	340 nm	Ready -to-use	12 months (2-8 °C)	/	/
		120mL	R1:48mL*2 R2:12mL*2									
ALT	Enzymatic	112.5mL	R1:30mL*3 R2:7.5mL*3	Rate	Serum, Plasma/12	5.0~1000.0 U/L	Batch-wise/ 28 days	340 nm	Ready -to-use	12 months (2-8 °C)	/	/
		120mL	R1:48mL*2 R2:12mL*2									
ALP	Enzymatic	112.5mL	R1:30mL*3 R2:7.5mL*3	Rate	Serum, Plasma/5	25.0-1000.0 U/L	Batch-wise/ 30 days	405 nm	Ready -to-use	12 months (2-8 °C)	/	/
		120mL	R1:48mL*2 R2:12mL*2									
GGT	Enzymatic	112.5mL	R1:30mL*3 R2:7.5mL*3	Rate	Serum, Plasma/25	10.0-600 U/L	Batch-wise/ 28 days	405 nm	Ready -to-use	12 months (2-8 °C)	/	/
		120mL	R1:48mL*2 R2:12mL*2									
TBA	Enzymatic cycling	112.5mL	R1:30mL*3 R2:7.5mL*3	Rate	Serum, Plasma/4	2.0~150.0 µmol/L	Batch-wise/ 30 days	405 nm	Ready -to-use	12 months (2-8 °C)	/	/
		120mL	R1:48mL*2 R2:12mL*2									
ADA	Enzymatic	112.5mL	R1:30mL*3 R2:7.5mL*3	Rate	Serum, Plasma/4	3.0~200.0 U/L	Batch-wise/ 14 days	546 nm	Ready -to-use	18 months (2-8 °C)	Zybio	Zybio
		120mL	R1:48mL*2 R2:12mL*2									
PA	Immunoturbidimetric	112.5mL	R1:30mL*3 R2:7.5mL*3	End-point	Serum/6	20.0~650.0 mg/L	Batch-wise/ 30 days	340 nm	Ready -to-use	12 months (2-8 °C)	Zybio	/
		120mL	R1:48mL*2 R2:12mL*2									

Abbr.	Measurement Method	Volume	Package	Calibration Routine	Sample Type/ Min. Sample Vol (µL)	Linearity Range	Calibration Cycle / On-board Stability	Optimum Absorbance Wavelength	Preparation before Usage	Shelf-Life	Calibrator	Control
CG	Latex enhanced immunoturbidimetric	112.5mL	R1:30mL*3 R2:7.5mL*3	End-point	Serum/5	0.5~ 50.0 mg/L	Batch-wise/ 30 days	600 nm	Ready -to-use	12 months (2-8 °C)	Zybio	Zybio
		120mL	R1:48mL*2 R2:12mL*2									
CG	Homogeneous enzyme immune	112.5mL	R1:30mL*3 R2:7.5mL*3	End-point	Serum/12	1.5~ 50.0 mg/L	Batch-wise/ 14 days	340 nm	Ready -to-use	12 months (2-8 °C)	Zybio	Zybio
		120mL	R1:48mL*2 R2:12mL*2									
ChE	Butyryl thiocholine	112.5mL	R1:30mL*3 R2:7.5mL*3	Rate	Serum, Plasma/3	1000.0- 25,000.0 U/L	Batch-wise/ 15 days	405 nm	Ready -to-use	12 months (2-8 °C)	/	/
		120mL	R1:48mL*2 R2:12mL*2									
5'-NT	Enzymatic	40mL	R1:30mL*1 R2:10mL*1	Rate	Serum/6	5.0~ 200.0 U/L	Batch-wise / 30 days	546 nm	Ready -to-use	18 months (2-8 °C)	Zybio	Zybio
		120mL	R1:45mL*2 R2:15mL*2									
mAST	Enzymatic inhibition	112.5mL	R1:30mL*3 R2:7.5mL*3	Rate	Serum/25	5.0~ 300.0 U/L	Batch-wise/ 28 days	340 nm	Ready -to-use	18 months (2-8 °C)	Zybio	Zybio
		120mL	R1:48mL*2 R2:12mL*2									
GLDH	Rate	20mL	R1:16mL*1 R2:4mL*1	Rate	Serum/20	5.0- 200.0 U/L	Batch-wise/ 30 days	340 nm	Ready -to-use	12 months (2-8 °C)	/	/
		120mL	R1:48mL*2 R2:12mL*2									
LAP	Rate	20mL	R1:16mL*1 R2:4mL*1	Rate	Serum/15	2.0~ 300.0 U/L	Batch-wise/ 30 days	405 nm	Ready -to-use	18 months (2-8 °C)	/	/
		37.5mL	R1:30mL*1 R2:7.5mL*1									
MAO	Rate	112.5mL	R1:30mL*3 R2:7.5mL*3	Rate	Serum/20	2.0 ~ 200.0 U/L	Batch-wise/ 10 days	340 nm	Ready -to-use	12 months (2-8 °C)	Factor	Zybio
		120mL	R1:48mL*2 R2:12mL*2									
FN	Immunoturbidimetric	80mL	R1:30mL*2 R2:10mL*2	End-point	Serum/7	20.0~ 600.0 mg/L	Batch-wise/ 28 days	340 nm	Ready -to-use	12 months (2-8 °C)	Zybio	Zybio
		120mL	R1:45mL*2 R2:15mL*2									
GR	Rate	108mL	R1:30mL*3 R2:6mL*3	Rate	Serum, Plasma/ 10	10.0~ 300.0 U/L	Batch-wise/ 30 days	340 nm	Ready -to-use	12 months (2-8 °C)	Zybio	Zybio
		120mL	R1:50mL*2 R2:10mL*2									
HAP	Immunoturbidimetric	108mL	R1:30mL*3 R2:6mL*3	End-point	Serum/2	10.0- 400.0 mg/dL	Batch-wise/ 10 days	340 nm	Ready-to- use	12 months (2-8 °C)	Zybio	Zybio
		120mL	R1:50mL*2 R2:10mL*2									
AAT	Immunoturbidimetric	108mL	R1:30mL*3 R2:6mL*3	End-point	Serum/4	20.0- 400.0 mg/dL	Batch-wise/ 10 days	340 nm	Ready-to- use	12 months (2-8 °C)	Zybio	Zybio
		120mL	R1:50mL*2 R2:10mL*2									
Renal Panel												
UREA	Urease-GLDH	112.5mL	R1:30mL*3 R2:7.5mL*3	Rate	Serum, Plasma/3	0.5- 40.0 mmol/L	Batch-wise/ 30 days	340 nm	Ready -to-use	12 months (2-8 °C)	/	/
		120mL	R1:48mL*2 R2:12mL*2									
CREA	Enzymatic	40mL	R1:30mL*1 R2:10mL*1	End-point	Serum, Plasma/5	20.0~ 2,000.0 µmol/L	Batch-wise/ 30 days	540 nm	Ready -to-use	12 months (2-8 °C)	/	/
		80mL	R1:30mL*2 R2:10mL*2									
		120mL	R1:45mL*2 R2:15mL*2									

Abbr.	Measurement Method	Volume	Package	Calibration Routine	Sample Type/ Min. Sample Vol (µL)	Linearity Range	Calibration Cycle / On-board Stability	Optimum Absorbance Wavelength	Preparation before Usage	Shelf-Life	Calibrator	Control
RBP	Latex enhanced immunoturbidimetric	40mL	R1:30mL*1 R2:10mL*1	End-point	Serum, Plasma, Urine/3	10.0-120.0 mg/ L (blood) 0.2-15.0 mg/L (urine)	Batch-wise/ 30 days	600 nm	Ready -to-use	12 months (2-8 °C)	Zybio	Zybio
		80mL	R1:30mL*2 R2:10mL*2									
		120mL	R1:45mL*2 R2:15mL*2									
UA	Uricase	112.5mL	R1:30mL*3 R2:7.5mL*3	End-point	Serum, Plasma/5	100.0-1190.0 µmol/L	Batch-wise/ 30 days	546 nm	Ready -to-use	12 months (2-8 °C)	/	/
		120mL	R1:48mL*2 R2:12mL*2									
CYS C	Colloidal gold immunoturbidimetric	112.5mL	R1:30mL*3 R2:7.5mL*3	End-point	Serum, Plasma/3	0.4~ 8.0 mg/L	Batch-wise/ 10 days	546 nm	Ready -to-use	14 months (2-8 °C)	Zybio	Zybio
		120mL	R1:48mL*2 R2:12mL*2									
CYS C	Latex enhanced immunoturbidimetric	108mL	R1:30mL*3 R2:6mL*3	End-point	Serum, Plasma/3	0.4~ 8.0 mg/L	Batch-wise/ 28 days	600 nm	Ready -to-use	12 months (2-8 °C)	Zybio	Zybio
		120mL	R1:50mL*2 R2:20mL*1									
α1-MG	Latex enhanced immunoturbidimetric	120mL	R1:30mL*3 R2:10mL*3	End-point	Serum, Plasma, Urine/2	2.0-160.0 mg/L (blood) 0.5-200.0 mg/L (urine)	Batch-wise/ 30 days	570 nm	Ready -to-use	12 months (2-8 °C)	Zybio	Zybio
		120mL	R1:45mL*2 R2:15mL*2									
TRF	Latex enhanced immunoturbidimetric	120mL	R1:30mL*3 R2:10mL*3	End-point	Urine/5	0.2~ 15.0 mg/L	Batch-wise/ 30 days	570 nm	Ready -to-use	12 months (2-8 °C)	Zybio	Zybio
		120mL	R1:45mL*2 R2:15mL*2									
β2-MG	Latex enhanced immunoturbidimetric	112.5mL	R1:30mL*3 R2:7.5mL*3	End-point	Serum, Plasma, Urine/3	0.4-20mg/L (blood) 0.15-24mg/L (urine)	Batch-wise/ 30 days	600 nm	Ready -to-use	12 months (2-8 °C)	Zybio	Zybio
		120mL	R1:48mL*2 R2:12mL*2									
NGAL	Latex enhanced immunoturbidimetric	112.5mL	R1:30mL*3 R2:7.5mL*3	End-point	Serum, Plasma, Urine/3	30~ 3000 ng/mL	Batch-wise/ 30 days	546 nm	Ready -to-use	12 months (2-8 °C)	Zybio	Zybio
		120mL	R1:48mL*2 R2:12mL*2									
NAG	Rate	112.5mL	R1:30mL*3 R2:7.5mL*3	Rate	Urine/16	4.0~ 200.0 U/L	Batch-wise/ 30 days	340 nm	Ready -to-use	12 months (2-8 °C)	Zybio	Zybio
		120mL	R1:48mL*2 R2:12mL*2									
mALB	Immunoturbidimetric	112.5mL	R1:30mL*3 R2:7.5mL*3	End-point	Urine/7	5.0~ 600.0 mg /L	Batch-wise/ 30 days	340 nm	Ready -to-use	12 months (2-8 °C)	Zybio	Zybio
		120mL	R1:48mL*2 R2:12mL*2									
Lipids Panel												
CHOL (Dual)	Enzymatic	112.5mL	R1:30mL*3 R2:7.5mL*3	End-point	Serum/3	1.0- 20.0 mmol/L	Batch-wise/ 30 days	546 nm	Ready -to-use	18 months (2-8 °C)	/	/
		120mL	R1:48mL*2 R2:12mL*2									
CHOL (Single)	Enzymatic	120mL	R:60mL*2	End-point	Serum/3	1.0- 20.0 mmol/L	Batch-wise/ 30 days	505 nm	Ready -to-use	12 months (2-8 °C)	/	/
		180mL	R:30mL*6									
Apo A1	Immunoturbidimetric	112.5mL	R1:30mL*3 R2:7.5mL*3	End-point	Serum, Plasma/3	0.4~ 2.5g /L	Batch-wise/ 28 days	340 nm	Ready -to-use	12 months (2-8 °C)	Zybio	/
		120mL	R1:48mL*3 R2:12mL*2									

Abbr.	Measurement Method	Volume	Package	Calibration Routine	Sample Type/ Min. Sample Vol (µL)	Linearity Range	Calibration Cycle / On-board Stability	Optimum Absorbance Wavelength	Preparation before Usage	Shelf-Life	Calibrator	Control
Apo B	Immunoturbidimetric	112.5mL	R1:30mL*3 R2:7.5mL*3	End-point	Serum, Plasma/3	0.4-2.5 g/L	Batch-wise/ 28 days	340 nm	Ready -to-use	12 months (2-8 °C)	Zybio	/
		120mL	R1:48mL*2 R2:12mL*2									
Apo E	Immunoturbidimetric	112.5mL	R1:30mL*3 R2:7.5mL*3	End-point	Serum/3	10.0-150.0 mg/L	Batch-wise/ 30 days	340 nm	Ready -to-use	12 months (2-8 °C)	Zybio	Zybio
		120mL	R1:48mL*2 R2:12mL*2									
NEFA	Enzymatic	112.5mL	R1:30mL*3 R2:7.5mL*3	End-point	Serum/4	0.15~3.0 mmol/L	Batch-wise/ 15 days	546 nm	Ready -to-use	12 months (2-8 °C)	Zybio	Zybio
		120mL	R1:48mL*2 R2:12mL*2									
TG (Dual)	Enzymatic	112.5mL	R1:30mL*3 R2:7.5mL*3	End-point	Serum/3	0.5-10.0 mmol/L	Batch-wise/ 30 days	546 nm	Ready -to-use	12 months (2-8 °C)	/	/
		120mL	R1:48mL*2 R2:12mL*2									
TG (Single)	Enzymatic	120 mL	R:60 mL*2	End-point	Serum/3	0.5-10.0 mmol/L	Batch-wise/ 30 days	505 nm	Ready -to-use	12 months (2-8 °C)	/	/
		180 mL	R:30 mL*6									
LDL-C	Enzymatic	120mL	R1:30mL*3 R2:10mL*3	End-point	Serum/3	0.2~11.60 mmol/ L	Batch-wise/ 30 days	546 nm	Ready -to-use	18 months (2-8 °C)	Zybio	Zybio
		120mL	R1:45mL*2 R2:15mL*2									
HDL-C	Enzymatic	120mL	R1:30mL*3 R2:10mL*3	End-point	Serum/3	0.2~4.0 mmol/ L	Batch-wise/ 30 days	546 nm	Ready -to-use	18 months (2-8 °C)	Zybio	Zybio
		120mL	R1:45mL*2 R2:15mL*2									
Lp(a)	Immunoturbidimetric	120mL	R1:30mL*3 R2:10mL*3	End-point	Serum, Plasma/3	5.0~900.0 mg/L	Batch-wise/ 30 days	600 nm	Ready -to-use	12 months (2-8 °C)	Zybio	Zybio
		120mL	R1:45mL*2 R2:15mL*2									

Cardiac & Cardiovascular Panel

ACE	Enzymatic	96 mL	R:16 mL*6	End-point	Serum, Plasma/25	10.0-150.0 U/L	Batch-wise/ 30 days	340 nm	Ready -to-use	12 months (2-8 °C)	Zybio	Zybio
		120 mL	R:60 mL*2									
		180 mL	R:30 mL*6									
hs-CRP	Immunoturbidimetric	120mL	R1:30 mL*3 R2:10 mL*3	End-point	Serum/3	0.5~300.0 mg/L	Batch-wise/ 30 days	600 nm	Ready -to-use	12 months (2-8 °C)	Zybio	/
		120mL	R1:45 mL*2 R2:15 mL*2									
HCY	Enzymatic	57mL	R1:15 mL*3 R2:4 mL*3	End-point	Serum/7	3.0~50.0 µmol/L	Batch-wise/ 30 days	340 nm	Ready -to-use	12 months (2-8 °C)	Zybio	Zybio
		114mL	R1:30 mL*3 R2:8 mL*3									
		120mL	R1:47 mL*2 R2:13 mL*2									
MPO	Latex enhanced immunoturbidimetric	108 mL	R1:30 mL*3 R2:6 mL*3	End-point	Serum/6	15.0~1,200.0 ng/mL	Batch-wise / 30 days	600 nm	Ready -to-use	12 months (2-8 °C)	Zybio	Zybio
		120 mL	R1:50 mL*2 R2:10 mL*2									

Abbr.	Measurement Method	Volume	Package	Calibration Routine	Sample Type/ Min. Sample Vol (µL)	Linearity Range	Calibration Cycle / On-board Stability	Optimum Absorbance Wavelength	Preparation before Usage	Shelf-Life	Calibrator	Control
Lp-PLA ₂	Rate	120 mL	R1:30 mL*3 R2A:9.5 mL*3 R2B:0.5 mL*3	Rate	Serum, Plasma/2	40~ 1,500.0 IU/L	Batch-wise / 24 days(R2A mix with R2B)	405 nm	Ready -to-use	12 months (2-8 °C)	Zybio	Zybio
LDH	Rate	112.5mL	R1:30 mL*3 R2:7.5 mL*3	Rate	Serum/5	25.0- 800.0 U/L	Batch-wise/ 30 days	340 nm	Ready -to-use	12 months (2-8 °C)	/	/
		120mL	R1:48 mL*2 R2:12 mL*2									
LDH1	Rate	112.5mL	R1:30 mL*3 R2:7.5 mL*3	Rate	Serum/5	5.0- 700.0 U/L	Batch-wise / 30 days	340 nm	Ready -to-use	12 months (2-8 °C)	Factor	Zybio
		120mL	R1:48 mL*2 R2:12 mL*2									
CK	Rate	112.5mL	R1:30 mL*3 R2:7.5 mL*3	Rate	Serum, Plasma/10	25- 1000 U/L	Batch-wise / 30 days	340 nm	Ready -to-use	18 months (2-8 °C)	/	/
		120mL	R1:48 mL*2 R2:12 mL*2									
CK-MB	Immunoinhibition	112.5mL	R1:30 mL*3 R2:7.5 mL*3	Rate	Serum, Plasma/10	2.0~ 500.0 U/L	Batch-wise / 30 days	340 nm	Ready -to-use	12 months (2-8 °C)	Factor	/
		120mL	R1:48 mL*2 R2:12 mL*2									
α-HBDH	Rate	112.5mL	R1:30 mL*3 R2:7.5 mL*3	Rate	Serum/6	25- 1200 U/L	Batch-wise/ 30 days	340 nm	Ready -to-use	12 months (2-8 °C)	/	/
		120mL	R1:48 mL*2 R2:12 mL*2									
MYO	Latex enhanced immunoturbidimetric	120mL	R1:30 mL*3 R2:10 mL*3	End-point	Serum, Plasma/6	10.0~ 800.0 ng/mL	Batch-wise/ 30 days	570 nm	Ready -to-use	12 months (2-8 °C)	Zybio	Zybio
		120mL	R1:45 mL*2 R2:15 mL*2									
cTnI	Latex enhanced immunoturbidimetric	120mL	R1:30 mL*3 R2:10 mL*3	End-point	Serum, Plasma/25	0.5~ 25.0 ng/mL	Batch-wise / 30 days	700 nm	Ready -to-use	12 months (2-8 °C)	Zybio	Zybio
		120mL	R1:45 mL*2 R2:15 mL*2									
SOD	Pyrogallol substrate	120mL	R1:30 mL*3 R2:10 mL*3	End-point	Serum/10	15.0~ 250.0 U/mL	Batch-wise/ 20 days	405 nm	Ready -to-use	15 months (2-8 °C)	Zybio	Zybio
		120mL	R1:45 mL*2 R2:15 mL*2									
H-FABP	Latex enhanced immunoturbidimetric	120mL	R1:30 mL*2 R2:15 mL*4	End-point	Serum, Plasma/6	2.5~ 120.0 ng/mL	Batch-wise/ 30 days	700 nm	Ready -to-use	12 months (2-8 °C)	Zybio	Zybio
		240mL	R1:60 mL*2 R2:60 mL*2									
Diabetes												
GLU	Hexokinase	37.5mL	R1:30 mL*1 R2:7.5 mL*1	End-point	Serum, Plasma/3	2- 40 mmol/L	Batch-wise/ 35 days	340 nm	Ready -to-use	18 months (2-8 °C)	/	/
		112.5mL	R1:30 mL*3 R2:7.5 mL*3									
		120mL	R1:48 mL*2 R2:12 mL*2									
HbA1c	Immunoturbidimetric	140mL	R1: 15mL*2 R2: 10mL*2 Lyse: 50mL*2	End-point	Whole blood/8	3.6%~ 14%	Batch-wise / 30 days	660 nm	Ready -to-use	12 months (2-8 °C)	Zybio	Zybio

Abbr.	Measurement Method	Volume	Package	Calibration Routine	Sample Type/ Min. Sample Vol (µL)	Linearity Range	Calibration Cycle / On-board Stability	Optimum Absorbance Wavelength	Preparation before Usage	Shelf-Life	Calibrator	Control
GSP	NBT	112.5mL	R1:30 mL*3 R2:7.5 mL*3	End-point	Serum, Plasma/15	0.4~ 6.0 mmol/L	Batch-wise / 30 days	546 nm	Ready -to-use	12 months (2-8 °C)	Zybio	Zybio
		120mL	R1:48 mL*2 R2:12 mL*2									
GA	Enzymatic	40mL	R1:16 mL*1 R2:4 mL*1 ALB R3:20 mL*1	End-point	Serum, Plasma/3	1-35 g/L	Batch-wise/ 30 days	Glycatedal- bumin: 546 nm Albumin: 630 nm	Ready -to-use	12 months (2-8 °C)	Zybio	Zybio
		120mL	R1:48 mL*1 R2:12 mL*1 ALB R3:60 mL*1									
LAC	Lactate oxidase	112.5mL	R1:30 mL*3 R2:7.5 mL*3	End-point	Plasma/3	0.5- 16.6 mmol/L	Batch-wise / 30 days	500 nm	Ready -to-use	18 months (2-8 °C)	Zybio	/
		120mL	R1:48 mL*2 R2:12 mL*2									
Coagulation												
D-D	Latex enhanced immunoturbidimetric	120mL	R1:30 mL*3 R2:10 mL*3	End-point	Plasma/6	0.2~ 20.0 µg/mL	Batch-wise/ 30 days	600 nm	Ready -to-use	12 months (2-8 °C)	Zybio	Zybio
		120mL	R1:45 mL*2 R2:15 mL*2									
FIB	Immunoturbidimetric	120mL	R1:30 mL*3 R2:10 mL*3	End-point	Plasma/2	0.5~ 8.0 g/L	Batch-wise/ 30 days	340 nm	Ready -to-use	12 months (2-8 °C)	Zybio	Zybio
		120mL	R1:45 mL*2 R2:15 mL*2									
FDP	Latex enhanced immunoturbidimetric	120mL	R1:20 mL*3 R2:20 mL*3	End-point	Plasma/3	1.0~ 80.0 mg/L	Batch-wise/ 30 days	570 nm	Ready -to-use	12 months (2-8 °C)	Zybio	Zybio
Specific Proteins												
IgG	Immunoturbidimetric	108mL	R1:30 mL*3 R2:6 mL*3	End-point	Serum/2	1.0- 35.0 g/L	Batch-wise / 30 days	600 nm	Ready -to-use	12 months (2-8 °C)	Zybio	/
		120mL	R1:50 mL*2 R2:10 mL*2									
IgA	Immunoturbidimetric	108mL	R1:30 mL*3 R2:6 mL*3	End-point	Serum/3	0.40- 5.40 g/L	Batch-wise/ 30 days	340 nm	Ready -to-use	12 months (2-8 °C)	Zybio	/
		120mL	R1:50 mL*2 R2:10 mL*2									
IgM	Immunoturbidimetric	108mL	R1:30 mL*3 R2:6 mL*3	End-point	Serum/3	0.20- 4.20 g/L	Batch-wise/ 30 days	340 nm	Ready -to-use	12 months (2-8 °C)	Zybio	/
		120mL	R1:50 mL*2 R2:10 mL*2									
SA	Enzymatic	120mL	R1:30 mL*3 R2:10 mL*3	Rate	Serum/6	10.0~ 200.0 mg/dL	Batch-wise/ 14 days	340 nm	Ready -to-use	12 months (2-8 °C)	Zybio	Zybio
		120mL	R1:45 mL*2 R2:15 mL*2									
C3	Immuno-transmission turbidimetric	40mL	R1:30 mL*1 R2:10 mL*1	End-point	Serum/4	0.3~ 4.5 g/L	Batch-wise/ 30 days	340 nm	Ready -to-use	12 months (2-8 °C)	Zybio	/
		120mL	R1:45 mL*2 R2:15 mL*2									
C4	Immuno-transmission turbidimetric	40mL	R1:30 mL*1 R2:10 mL*1	End-point	Serum/4	0.02~ 1.2 g/L	Batch-wise/ 30 days	340 nm	Ready -to-use	12 months (2-8 °C)	Zybio	/
		120mL	R1:45 mL*2 R2:15 mL*2									

Abbr.	Measurement Method	Volume	Package	Calibration Routine	Sample Type/ Min. Sample Vol (µL)	Linearity Range	Calibration Cycle / On-board Stability	Optimum Absorbance Wavelength	Preparation before Usage	Shelf-Life	Calibrator	Control
IgE	Latex enhanced immunoturbidimetric	72mL	R1:16 mL*3 R2:8 mL*3	End-point	Serum/3	25.0~ 1,000.0 IU/mL	Batch-wise/ 30 days	600 nm	Ready -to-use	12 months (2-8 °C)	Zybio	Zybio
		120mL	R1:40 mL*2 R2:20 mL*2									
Fer	Latex enhanced immunoturbidimetric	135mL	R1:30 mL*3 R2:15 mL*3	End-point	Serum/10	10.0~ 1,000.0 ng/mL	Batch-wise/ 30 days	570 nm	Ready -to-use	12 months (2-8 °C)	Zybio	Zybio
		120mL	R1:40 mL*2 R2:20 mL*2									
PGI	Latex enhanced immunoturbidimetric	112.5mL	R1:30 mL*3 R2:7.5 mL*3	End-point	Serum, Plasma/6	10.0~ 250.0 ng/mL	Batch-wise/ 30 days	700 nm	Ready -to-use	12 months (2-8 °C)	Zybio	Zybio
		128mL	R1:54 mL*2 R2:10 mL*2									
PGII	Latex enhanced immunoturbidimetric	112.5mL	R1:30 mL*3 R2:7.5 mL*3	End-point	Serum, Plasma/6	3.0~ 100.0 ng/mL	Batch-wise/ 30 days	700 nm	Ready -to-use	12 months (2-8 °C)	Zybio	Zybio
		128mL	R1:54 mL*2 R2:10 mL*2									
C1q	Immunoturbidimetric	20mL	R1:16 mL*1 R2:4 mL*1	End-point	Serum/4	50.0~ 500.0 mg/L	Batch-wise/ 10 days	340 nm	Ready -to-use	12 months (2-8 °C)	Zybio	Zybio
		120mL	R1:48 mL*2 R2:12 mL*2									
CSF/ UTP	Pyro-gallol red- molybdate	120mL	R:60 mL*2	End-point	Urine, CSF/4	1.0~ 200.0 mg/dL	Batch-wise/ 10 days	600 nm	Ready -to-use	12 months (2-8 °C)	Zybio	Zybio
		180mL	R:30 mL*6									

Rheumatic & Rheumatoid Panel

ASO	Latex enhanced immunoturbidimetric	112.5mL	R1:30 mL*3 R2:7.5 mL*3	End-point	Serum/6	30.0~ 800.0 IU/mL	Batch-wise/ 30 days	600 nm	Ready -to-use	12 months (2-8 °C)	Zybio	/
		120mL	R1:48 mL*2 R2:12 mL*2									
RF	Latex enhanced immunoturbidimetric	112.5mL	R1:30 mL*3 R2:7.5 mL*3	End-point	Serum/5	2.0~ 200.0 IU/mL	Batch-wise/ 30 days	600 nm	Ready -to-use	12 months (2-8 °C)	Zybio	/
		120mL	R1:48 mL*2 R2:12 mL*2									
anti- CCP	Latex enhanced immunoturbidimetric	120mL	R1:30 mL*3 R2:10 mL*3	End-point	Serum/8	5.0~ 150.0 U/mL	Batch-wise/ 10 days	546 nm	Ready -to-use	12 months (2-8 °C)	Zybio	Zybio
		120mL	R1:45 mL*2 R2:15 mL*2									

Electrolytes

Fe	5-Br- PADAPchromogenic end-point	112.5mL	R1:30 mL*3 R2:7.5 mL*3	End-point	Serum/25	2.0- 180.0 µmol/L	Batch-wise/ 30 days	546 nm	Ready -to-use	12 months (2-8 °C)	Zybio	/
		120mL	R1:48 mL*2 R2:12 mL*2									
Zn	5-Br- PADAPchromogenic end-point	112.5mL	R1:30 mL*3 R2:7.5 mL*3	End-point	Serum/25	2.0- 60.0 µmol/L	Batch-wise/ 20 days	546 nm	Ready -to-use	12 months (2-8 °C)	Zybio	/
		120mL	R1:48 mL*2 R2:12 mL*2									
CO ₂	Enzymatic	90mL	R:30 mL*3	End-point	Serum/3	10.0- 50.0 mmol/L	Batch-wise/ 15 days	405 nm	Ready -to-use	12 months (2-8 °C)	Zybio	Zybio
		180mL	R:30 mL*6									
Ca	Arsenazo III	120mL	R:60mL*2	End-point	Serum, Plasma/3	1.0- 4.0 mmol/L	Batch-wise / 28 days	660 nm	Ready -to-use	12 months (2-8 °C)	Zybio	/
		180mL	R:30 mL*6									
P	Direct UV	120mL	R:60 mL*2	End-point	Serum/5	0.2- 3.0 mmol/L	Batch-wise/ 30 days	340 nm	Ready -to-use	12 months (2-8 °C)	/	/
		180mL	R:30 mL*6									
Mg	Xylidyl blue	120mL	R:60 mL*2	End-point	Serum, Plasma/3	0.2- 2.0 mmol/L	Batch-wise / 30 days	505 nm	Ready -to-use	12 months (2-8 °C)	Zybio	/
		180mL	R:30 mL*6									

Abbr.	Measurement Method	Volume	Package	Calibration Routine	Sample Type/ Min. Sample Vol (µL)	Linearity Range	Calibration Cycle / On-board Stability	Optimum Absorbance Wavelength	Preparation before Usage	Shelf-Life	Calibrator	Control
Inflammation												
PCT	Latex enhanced immunoturbidimetric	120mL	R1:30 mL*3 R2:10 mL*3	End-point	Serum/15	0.1~60.0 ng/mL	Batch-wise/ 28 days	600 nm	Ready -to-use	12 months (2-8 °C)	Zybio	Zybio
		120mL	R1:45 mL*2 R2:15 mL*2									
SAA	Immunochromatographic	112.5mL	R1:30 mL*3 R2:7.5 mL*3	End-point	Serum, Plasma/4	2.0~240.0 mg/L	Batch-wise/ 28 days	600 nm	Ready -to-use	12 months (2-8 °C)	Zybio	Zybio
		120mL	R1:48 mL*2 R2:12 mL*2									
CRP	Immunoturbidimetric	120mL	R1:30 mL*3 R2:10 mL*3	End-point	Serum/12	5.0-300.0 mg/L	Batch-wise/ 30 days	340 nm	Ready -to-use	12 months (2-8 °C)	Zybio	/
		120mL	R1:45 mL*2 R2:15 mL*2									
Pancreatitis												
α-AMY	E-pNP-G7	112.5mL	R1:30 mL*3 R2:7.5 mL*3	Rate	Serum, Plasma, Urine/5	5.0-1000.0 U/L	Batch-wise/ 30 days	405 nm	Ready -to-use	18 months (2-8 °C)	/	/
		120mL	R1:48 mL*2 R2:12 mL*2									
LPS	Methoxyresorufin substrate	120mL	R1:30 mL*3 R2:10 mL*3	Rate	Serum, Plasma/3	8.0~300.0 U/L	Batch-wise/ 30 days	570 nm	Ready -to-use	18 months (2-8 °C)	Zybio	Zybio
		120mL	R1:45 mL*2 R2:15 mL*2									

Clinical Chemistry Reagent

Your diagnostic solution partner

Abbr.	Size	Status	Brand
Calibrator			
ADA	1 level * 0.6 mL/1 level * 1.0 mL	Liquid	Zybio
PA	4 levels * 0.6 mL/4 levels * 1.0 mL	Lyophilized	Zybio
CG (homogeneous enzyme immune method)	6 levels * 0.6 mL	Liquid	Zybio
CG (latex enhanced immunoturbidimetric method)	5 levels * 0.6 mL	Liquid	Zybio
5'-NT	1 level * 1.0 mL	Lyophilized	Zybio
mAST	1 level * 1.0 mL	Lyophilized	Zybio
FN	5 levels * 0.6 mL	Liquid	Zybio
GR	1 level * 0.5 mL	Lyophilized	Zybio
HAP	1 level * 1.0 mL	Liquid	Zybio
AAT	1 level * 0.5 mL	Liquid	Zybio
CYS C (latex enhanced immunoturbidimetric method)	6 levels * 0.6 mL	Liquid	Zybio
CYS C (colloidal gold immunoturbidimetric method)	6 levels * 0.6 mL/6 levels * 1.0 mL	Liquid	Zybio
RBP	5 levels * 0.6 mL/5 levels * 1.0 mL	Liquid	Zybio
α1-MG	6 levels * 0.6 mL/6 levels * 1.0 mL	Liquid	Zybio
TRF (urine)	5 levels * 0.6 mL/5 levels * 1.0 mL	Liquid	Zybio
β2-MG	5 levels * 0.6 mL/5 levels * 1.0 mL	Liquid	Zybio
NGAL	5 levels * 0.6 mL/5 levels * 1.0 mL	Liquid	Zybio
NAG	2 levels * 1.0 mL	Lyophilized	Zybio
mALB	6 levels * 0.6 mL	Lyophilized	Zybio
Apo A1	4 levels * 0.5 mL	Lyophilized	Zybio
Apo B	4 levels * 0.5 mL	Lyophilized	Zybio
Apo E	1 level * 1.0 mL	Lyophilized	Zybio
NEFA	1 level * 1.0 mL	Lyophilized	Zybio
LDL-C	1 level * 1.0 mL	Lyophilized	Zybio
HDL-C	1 level * 1.0 mL	Lyophilized	Zybio
Lp(a)	5 levels * 0.6 mL	Liquid	Zybio
ACE	1 level * 1.0 mL	Lyophilized	Zybio
hs-CRP	6 levels * 0.6 mL	Liquid	Zybio
HCY	5 levels * 0.6 mL	Liquid	Zybio
MPO	5 levels * 0.5 mL/5 levels * 1.0 mL	Liquid	Zybio
Lp-PLA2	1 level * 1.0 mL	Lyophilized	Zybio
LDH1	1 level * 1.0 mL	Lyophilized	Zybio
MYO	5 levels * 0.6 mL	Liquid	Zybio
cTnI	5 levels * 0.5 mL/5 levels * 1.0 mL	Liquid	Zybio
H-FABP	6 levels * 0.6 mL/6 levels * 1.0 mL	Liquid	Zybio
HbA1c	5 levels * 1.0 mL	Lyophilized	Zybio
GA	2 levels * 1.0 mL	Lyophilized	Zybio
GSP	1 level * 0.6 mL/1 level * 1.0 mL	Liquid	Zybio
LAC	1 level * 0.6 mL/1 level * 1.0 mL	Liquid	Zybio

Abbr.	Size	Status	Brand
PgI	6 levels * 0.6 mL/6 levels * 1.0 mL	Liquid	Zybio
PgII	6 levels * 0.6 mL/6 levels * 1.0 mL	Liquid	Zybio
Fer	6 levels * 0.6 mL	Liquid	Zybio
SA	1 level * 1.0 mL	Liquid	Zybio
D-D	1 level * 1.0 mL	Lyophilized	Zybio
FIB	1 level * 1.0 mL	Lyophilized	Zybio
FDP	1 level * 1.0 mL	Lyophilized	Zybio
IgG	1 level * 1.0 mL	Lyophilized	Zybio
IgA	1 level * 1.0 mL	Lyophilized	Zybio
IgM	1 level * 1.0 mL	Lyophilized	Zybio
C3	1 level * 1.0 mL	Lyophilized	Zybio
C4	1 level * 1.0 mL	Lyophilized	Zybio
IgE	6 levels * 0.6 mL	Liquid	Zybio
SOD	1 level * 1.0 mL	Lyophilized	Zybio
C1q	5 levels * 0.6 mL	Liquid	Zybio
CSF/UTP	1 level * 0.6 mL	Liquid	Zybio
sTRF	1 level * 1.0 mL	Liquid	Zybio
ASO	5 levels * 1 mL	Lyophilized	Zybio
RF	1 level * 0.6 mL	Lyophilized	Zybio
anti-CCP	5 levels * 0.6 mL	Liquid	Zybio
Fe	1 level * 1.0 mL	Liquid	Zybio
Zn	1 level * 0.6 mL	Liquid	Zybio
CO2	1 level * 0.6 mL/1 level * 1.0 mL	Liquid	Zybio
Ca	1 level * 5.0 mL	Lyophilized	Zybio
Mg	1 level * 1.0 mL	Liquid	Zybio
PCT	5 levels * 0.5 mL/5 levels * 1.0 mL	Lyophilized	Zybio
SAA	5 levels * 0.6 mL	Liquid	Zybio
CRP	6 levels * 0.6 mL/6 levels * 1.0 mL	Liquid	Zybio
LPS	1 level * 1.0 mL	Lyophilized	Zybio

Clinical Chemistry Reagent

Your diagnostic solution partner

Abbr.	Size	Status	Brand
Control			
ADA	2 levels * 0.6 mL/2 levels * 1.0 mL	Liquid	Zybio
CG (homogeneous enzyme immune method)	2 levels * 0.6 mL	Liquid	Zybio
CG (latex enhanced immunoturbidimetric method)	2 levels * 0.6 mL	Liquid	Zybio
5'-NT	2 levels * 1.0 mL	Lyophilized	Zybio
mAST	2 levels * 1.0 mL	Lyophilized	Zybio
MAO	1 levels * 1.0 mL	Lyophilized	Zybio
FN	2 levels * 0.6 mL	Liquid	Zybio
GR	2 levels * 0.5 mL	Lyophilized	Zybio
HAP	2 levels * 0.5 mL	Liquid	Zybio
AAT	2 levels * 0.5 mL	Liquid	Zybio
CYS C (latex enhanced immunoturbidimetric method)	2 levels * 0.6 mL	Liquid	Zybio
CYS C (colloidal gold immunoturbidimetric method)	2 levels * 0.6 mL/2 levels * 1.0 mL	Liquid	Zybio
RBP	2 levels * 0.6 mL/2 levels * 1.0 mL	Liquid	Zybio
α1-MG	2 levels * 0.6 mL/2 levels * 1.0 mL	Liquid	Zybio
uTRF	2 levels * 0.6 mL/2 levels * 1.0 mL	Liquid	Zybio
β2-MG	2 levels * 0.6 mL/2 levels * 1.0 mL	Liquid	Zybio
NGAL	1 level * 0.6 mL/1 level * 1.0 mL	Liquid	Zybio
NAG	2 levels * 1.0 mL	Lyophilized	Zybio
mALB	2 levels * 0.6 mL	Lyophilized	Zybio
Apo E	2 levels * 1.0 mL	Lyophilized	Zybio
NEFA	2 levels * 0.6 mL/2 levels * 1.0 mL	Liquid	Zybio
LDL-C	2 levels * 1.0 mL	Lyophilized	Zybio
HDL-C	2 levels * 1.0 mL	Lyophilized	Zybio
Lp(a)	2 levels * 0.6 mL	Liquid	Zybio
ACE	1 level * 1.0 mL	Lyophilized	Zybio
HCY	2 levels * 0.6 mL/1 level * 1mL	Liquid	Zybio
MPO	2 levels * 0.5 mL/2 levels * 1.0 mL	Liquid	Zybio
Lp-PLA2	2 levels * 1.0 mL	Lyophilized	Zybio
LDH1	2 levels * 1.0 mL	Lyophilized	Zybio
MYO	2 levels * 0.6 mL	Liquid	Zybio
cTnl	2 levels * 1.0mL	Lyophilized	Zybio
H-FABP	2 levels * 0.6 mL/2 levels * 1.0 mL	Liquid	Zybio
HbA1c	2 levels * 1.0 mL	Lyophilized	Zybio
GA	2 levels * 1.0 mL	Lyophilized	Zybio
GSP	2 levels * 0.6 mL/2 levels * 1.0 mL	Liquid	Zybio

Abbr.	Size	Status	Brand
PGL	2 levels * 0.6 mL/2 levels * 1.0 mL	Liquid	Zybio
PGLI	2 levels * 0.6 mL/2 levels * 1.0 mL	Liquid	Zybio
Fer	2 levels * 0.6 mL	Liquid	Zybio
SA	2 levels * 1.0 mL	Liquid	Zybio
D-D	2 levels * 1.0 mL	Lyophilized	Zybio
FIB	2 levels * 1.0 mL	Lyophilized	Zybio
FDP	2 levels * 0.6 mL/2 levels * 1.0 mL	Lyophilized	Zybio
IgE	2 levels * 0.6 mL	Liquid	Zybio
SOD	2 levels * 1.0 mL	Lyophilized	Zybio
C1q	2 levels * 0.6 mL	Liquid	Zybio
CSF/UTP	1 level * 0.6 mL	Liquid	Zybio
sTRF	2 levels * 0.5 mL	Liquid	Zybio
anti-CCP	2 levels * 0.6 mL	Liquid	Zybio
CO2	1 level * 0.6 mL/1 level * 1.0 mL	Liquid	Zybio
PCT	1 level * 1.0 mL/2 level * 1.0 mL	Lyophilized	Zybio
SAA	2 levels * 0.6 mL	Liquid	Zybio
LPS	2 levels * 1.0 mL	Lyophilized	Zybio

Recommended Chemistry

Panel	Method
Hepatic Panel	
CG	Latex enhanced immunoturbidimetric
mAST	Enzymatic inhibition
PA	Immunoturbidimetric
Renal Panel	
CYS C	Colloidal gold immunoturbidimetric
mALB	Immunoturbidimetric
Lipids Panel	
sdLDL-C	Enzymatic
Cardiac & Cardiovascular Panel	
H-FABP	Latex enhanced immunoturbidimetric
cTnI	Latex enhanced immunoturbidimetric
SOD	Pyrogallol substrate
Lp-PLA ₂	Rate
hs-CRP	Immunoturbidimetric
HbA1c	Immunoturbidimetric
GA	Enzymatic
Coagulation	
D-D	Latex enhanced immunoturbidimetric
FDP	Latex enhanced immunoturbidimetric
Specific Proteins	
PGI	Latex enhanced immunoturbidimetric
PGII	Latex enhanced immunoturbidimetric
Rheumatic & Rheumatoid Panel	
RF	Latex enhanced immunoturbidimetric
anti-CCP	Latex enhanced immunoturbidimetric
Inflammation	
PCT	Latex enhanced immunoturbidimetric





Zybio Inc.

Address: Floor 1 to Floor 5, Building 30, No.6 of Taikang Road,
Block C of Jianqiao Industrial Park, Dadukou District, 400082 Chongqing,
PEOPLE'S REPUBLIC OF CHINA

Tel: +86-23 6865 5509 Fax: +86-23 6869 9779

Email: info@zybio.com Website: www.zybio.com

EN-SH-Clinical Chemistry Reagent-20230116H

Chemistry