

# Toxicology Urine Test

## Features and Benefits

- Fast & accurate results.
- Multiple cut-off & format options.
- Convenient visual interpretation.
- Simple collection and testing procedure.
- Optional adulterant tests: CRE, GLUT, NIT, OX, pH, SG.



*Strip/Cassette/Dip Card/Cup*



OG-D180

*Colloidal Gold Test Reader*

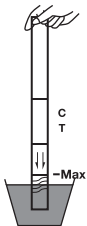


OG-D600

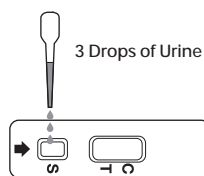
*2 in 1 Multi-Function Colloidal Gold Test Reader*

## ◆ Test Procedure and Interpretation

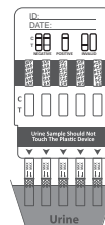
### Strip Test



### Cassette Test



### Dip Card Test



### Cup Test

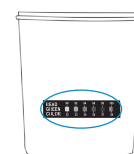
**1** Donor provides urine specimen in cup. If desired, cap can be held by operator to initiate the test at a later time.

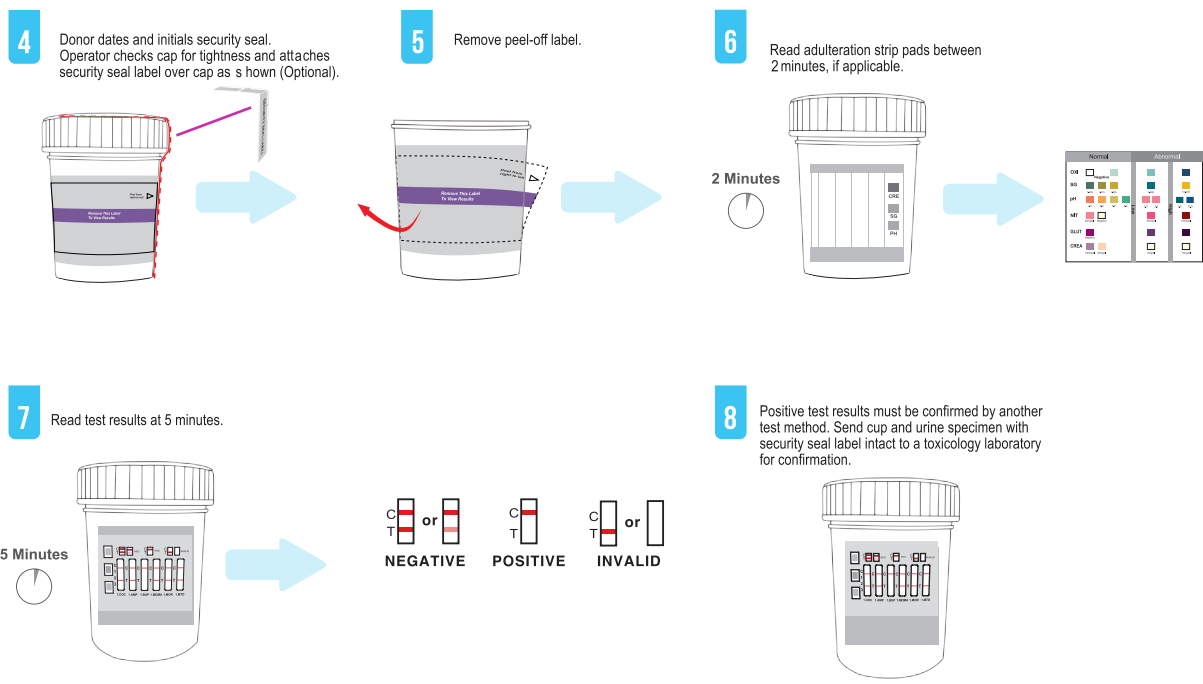


**2** Once urine sample has been collected, screw cap **firmly** onto cup.



**3** Check urine temperature at 2-4 minutes by reading green color on temperature indicator strip.





Product Description	Format	Cut-off Value	Qualification
Acetaminophen (ACE) Test	Strip/Cassette/Dip Card/Cup	5000 ng/mL	CE
Amphetamine (AMP) Test	Strip/Cassette/Dip Card/Cup	2000/1000/500/300/250 ng/mL	CE 510(k)
Barbiturates (BAR) Test	Strip/Cassette/Dip Card/Cup	2000/600/300/200 ng/mL	CE 510(k)
Benzodiazepines (BZO) Test	Strip/Cassette/Dip Card/Cup	600/400/300/200/100 ng/mL	CE 510(k)
Buprenorphine (BUP) Test	Strip/Cassette/Dip Card/Cup	10/5 ng/mL	CE 510(k)
Carisoprodol (SOMA) Test	Strip/Cassette/Dip Card/Cup	1000 ng/mL	CE
Clonazepam (CLO) Test	Strip/Cassette/Dip Card/Cup	500/100 ng/mL	CE
Cocaine (COC) Test	Strip/Cassette/Dip Card/Cup	600/300/150/100 ng/mL	CE 510(k)
Codeine (COD) Test	Strip/Cassette/Dip Card/Cup	2000 ng/mL	CE
Cotinine (COT) Test	Strip/Cassette/Dip Card/Cup	400/300/200/100/50 ng/mL	CE
Ecstasy (MDMA) Test	Strip/Cassette/Dip Card/Cup	2000/1000/500/300/250/150 ng/mL	CE 510(k)
Ethyl Glucuronide (ETG) Test	Strip/Cassette/Dip Card/Cup	500/300ng/mL	CE
Fentanyl (FEN) Test	Strip/Cassette/Dip Card/Cup	300/200/100/50 ng/mL	CE
Norfentanyl (FEN) Test	Strip/Cassette/Dip Card/Cup	200/50/20/10/5 ng/mL	CE
Gabapentin (GAB) Test	Strip/Cassette/Dip Card/Cup	3750/2000/1000 ng/mL	CE
Hydrocodone (HCD) Test	Strip/Cassette/Dip Card/Cup	300/10 ng/mL	CE
Hydromorphone (HMO) Test	Strip/Cassette/Dip Card/Cup	300 ng/mL	CE
Ketamine (KET) Test	Strip/Cassette/Dip Card/Cup	3000/2000/1000/500/100 ng/mL	CE
Kratom (KRA) Test	Strip/Cassette/Dip Card/Cup	250/150/100 ng/mL	CE
Lysergic acid diethylamide (LSD) Test	Strip/Cassette/Dip Card/Cup	20 ng/mL	CE
Marijuana (THC) Test	Strip/Cassette/Dip Card/Cup	600/300/200/150/50/40/25/20/18/15 ng/mL	CE 510(k)
Methadone Metabolite (EDDP) Test	Strip/Cassette/Dip Card/Cup	300/100 ng/mL	CE 510(k)
Methadone (MTD) Test	Strip/Cassette/Dip Card/Cup	1000/600/300/200/50 ng/mL	CE 510(k)
Methamphetamine (MET) Test	Strip/Cassette/Dip Card/Cup	2000/1000/500/300/250 ng/mL	CE 510(k)
Methaqualone (MQL) Test	Strip/Cassette/Dip Card/Cup	300/1000 ng/mL	CE
Methcathinone (MTC) Test	Strip/Cassette/Dip Card/Cup	500/300 ng/mL	CE
3,4-Methylenedioxypropylverone (MDPV) Test	Strip/Cassette/Dip Card/Cup	1000/500/300 ng/mL	CE
Methylphenidate (MPD) Test	Strip/Cassette/Dip Card/Cup	300 ng/mL	CE
6-Monoacetylmorphine (6-MAM) Test	Strip/Cassette/Dip Card/Cup	20/10 ng/mL	CE
Morphine (MOP) Test	Strip/Cassette/Dip Card/Cup	2000/600/300/150/100 ng/mL	CE 510(k)
Opiate (OPI) Test	Strip/Cassette/Dip Card/Cup	2000/300/100 ng/mL	CE 510(k)
Oxycodone (OXY) Test	Strip/Cassette/Dip Card/Cup	300/100 ng/mL	CE 510(k)
Phencyclidine (PCP) Test	Strip/Cassette/Dip Card/Cup	50/25 ng/mL	CE 510(k)
Pinaca Ab (K3) Test	Strip/Cassette/Dip Card/Cup	10 ng/mL	CE
Pregabalin (PGB) Test	Strip/Cassette/Dip Card/Cup	2000/1000/500 ng/mL	CE
Propoxyphene (PPX) Test	Strip/Cassette/Dip Card/Cup	600/300 ng/mL	CE 510(k)
Synthetic Marijuana (K2) Test	Strip/Cassette/Dip Card/Cup	75/50/25/20/10 ng/mL	CE
Tramadol (TRA) Test	Strip/Cassette/Dip Card/Cup	200/100 ng/mL	CE
Tricyclic Antidepressants (TCA) Test	Strip/Cassette/Dip Card/Cup	1000/300 ng/mL	CE 510(k)
UR-144 Test	Strip/Cassette/Dip Card/Cup	50 ng/mL	CE
Zolpidem (ZOL) Test	Strip/Cassette/Dip Card/Cup	50 ng/mL	/
Zopiclone (ZOP) Test	Strip/Cassette/Dip Card/Cup	50 ng/mL	/
Alcohol (ALC) Test	Strip/Cassette/Dip Card/Cup	0.04%	CE